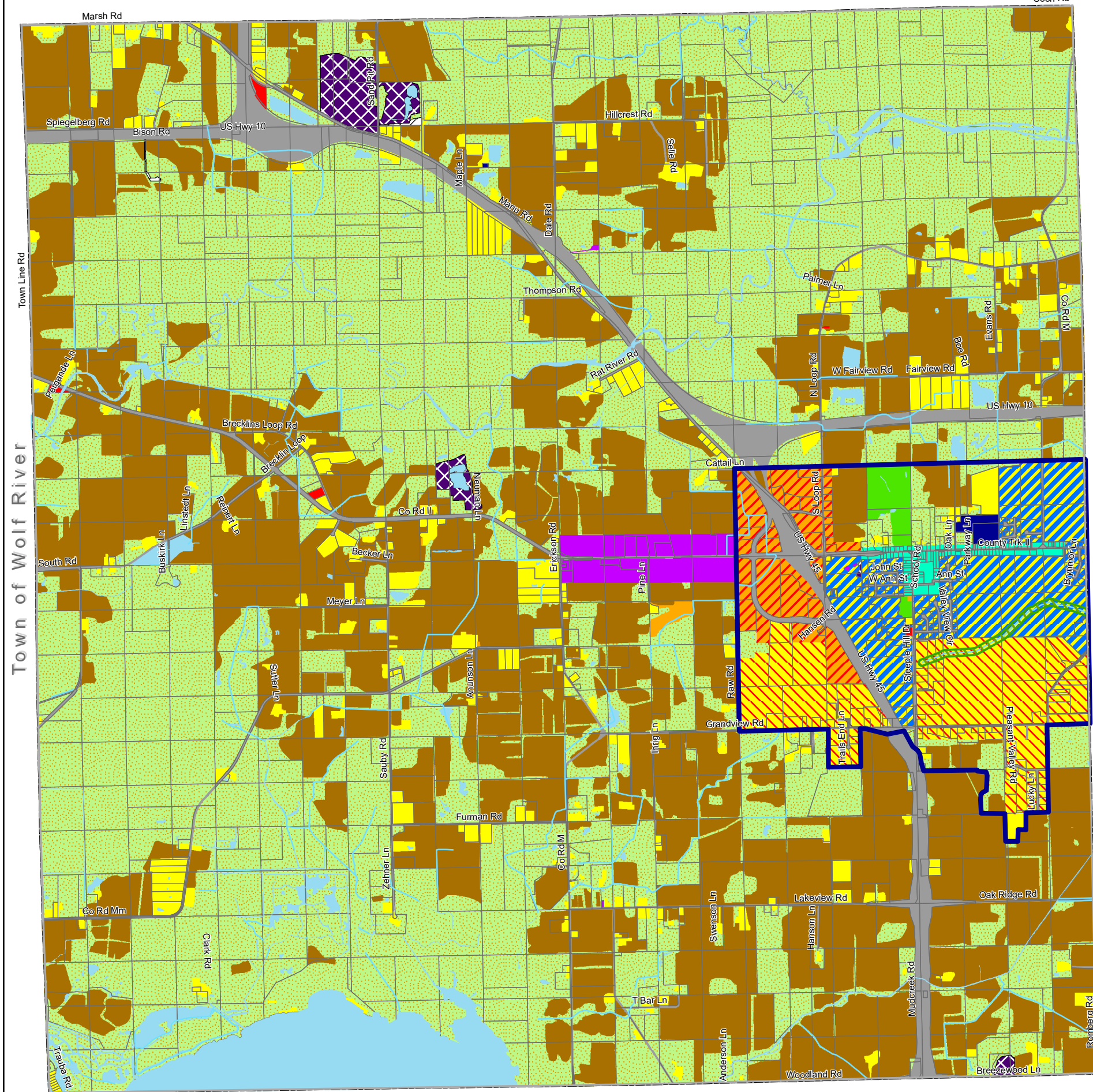


TOWN OF WINCHESTER

2022 Comprehensive Plan - Future Land Use Map
Winnebago County, Wisconsin



- Town Boundary
- Town Core Boundary
- 100 ft Riparian Buffer
- Rivers & Streams
- Parcels
- Neighborhood Commercial & Single Family
- Single & Multi-Family Residential
- Transitional Residential District
- Highway Commercial
- Single Family and Subdivision District
- Multi-Unit High Density District
- Commercial District
- Industrial District
- Extraction District
- Institutional Facilities
- Transportation
- Utility and Community Facilities District
- Agricultural District
- Environmental Resource District
- Recreational Facilities
- Open Water

Town of Clayton

Town of Wolf River

Created: August 9, 2022

The information shown on this map is for planning purposes only. Any other use of this information displayed is the responsibility of the user and to be used at their own risk. There is no guarantee of accuracy in the data of this map.

