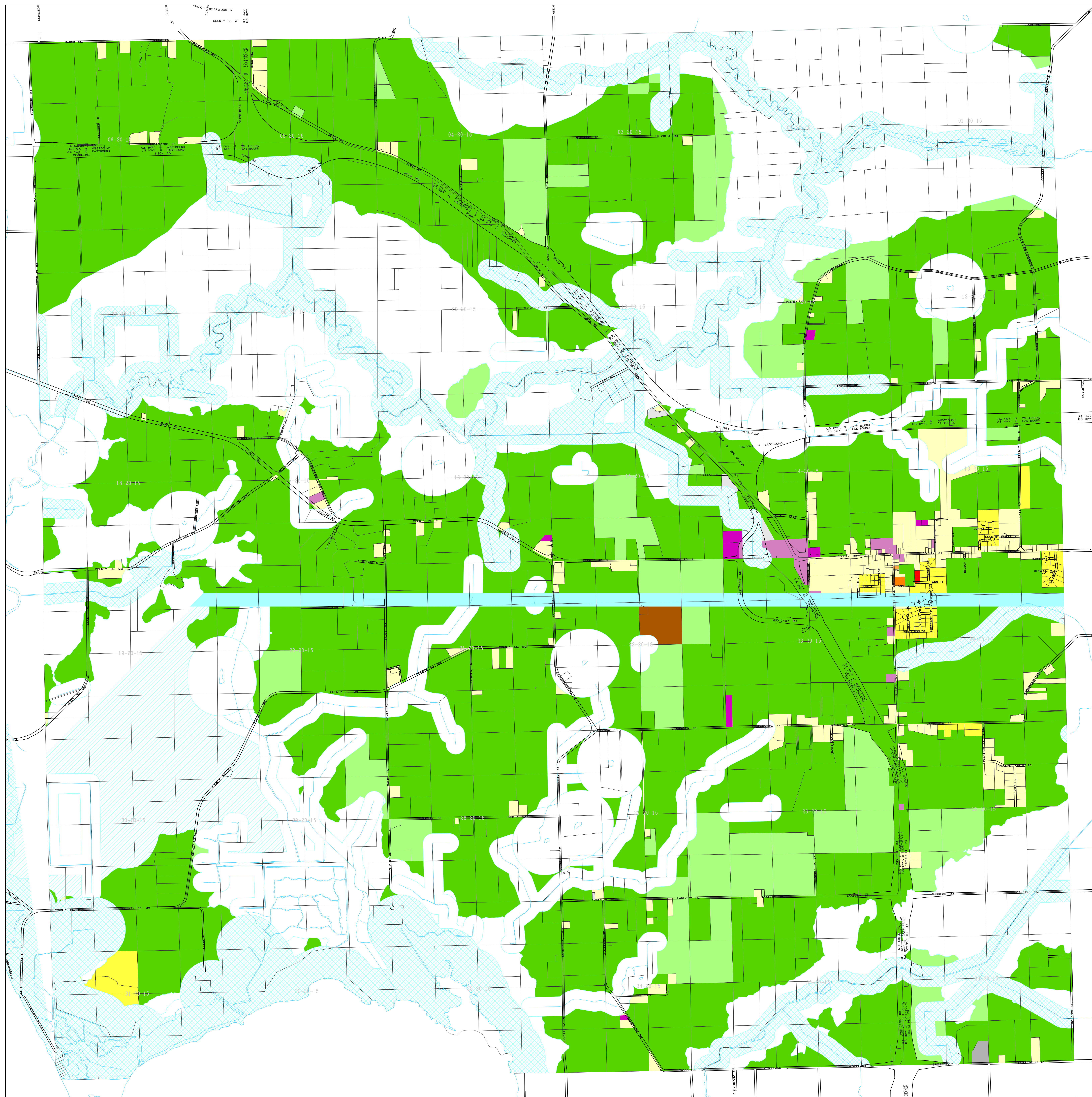


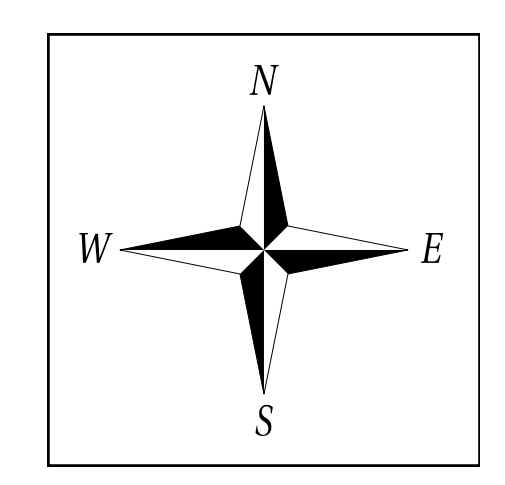
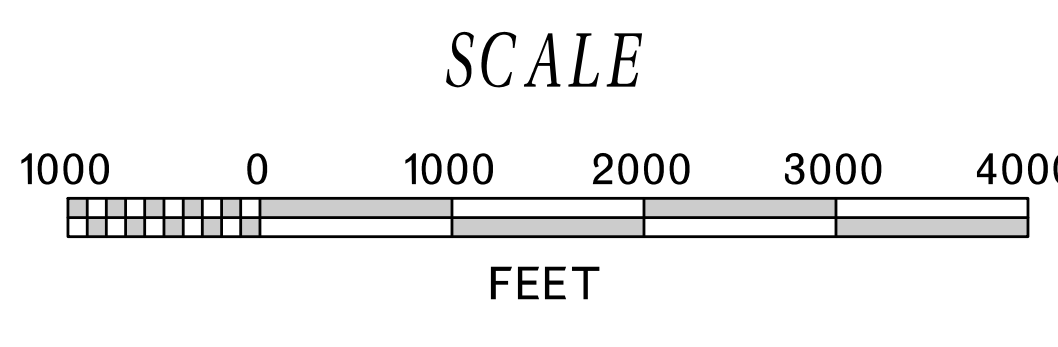
# TOWN OF WINCHESTER TOWN ZONING MAP



**TOWN OF WINCHESTER ZONING DISTRICTS**

A-1	Agribusiness District
A-2	General Agricultural District
B-1	Local Service District
B-2	Community Business District
B-3	General Business District
I-1	Light Industrial District
I-2	Heavy Industrial District
R-1	Rural Residential District
R-2	Suburban Residential District
R-3	Two-Family Residential District
R-4	Multi-Family Residential District
R-5	Manufactured/Mobile Home Community District
PDD	Planned Development (Overlay) District
M-1	Mixed-Use District
<b>Other Area</b>	
Shoreland - The following Chapters of the Winnebago County General Code Apply: Chapter 23 - Town/County Zoning Code Chapter 27 - Shoreland Zoning Code	

ADOPTED BY TOWN BOARD 2-18-13  
ADOPTED BY COUNTY BOARD 4-16-13  
Last Zoning Revision: 4-16-13



**W.I.N.G.S. PROJECT DISCLAIMER**  
This data was created for use by the Winnebago County Geographic Information System project. Any other use/application of this information is the responsibility of the user and such use/application is at their own risk. Winnebago County disclaims all liability regarding fitness of the information for any use other than Winnebago County business. Copyright © December 31, 2006 Winnebago County. This map reflects data which is protected by copyright.